

SAMSUNG ELECTRONICS CANADA, INC.

HEADQUARTERS

7037 Financial Drive, Mississauga, Ontario, Canada L5N 6R3

TEL: 1-905-542-3535

www.samsung.ca

SERVICE DIVISION

7037 Financial Drive, Mississauga, Ontario, Canada L5N 6R3

1-800-SAMSUNG (1-800-726-7864)



AH68-01283E (Rev 0.0)

SAMSUNG

YP-35



DIGITAL AUDIO PLAYER

yepp™

MP3 & WMA Playback
Removable Storage Device
3D Stereo Sound
Upgradable
Long Battery Life of up to 15hrs



Contents

Preparations

Safety Instructions	4
Features	6
Components	9
Location of Controls (yepp)	10

Connection to Computer

Connecting yepp to PC	12
Manual Installation of USB Driver	16
Using the removable storage.....	20
● Downloading/Uploading files	20
● Disconnecting the USB cable	21
● Formatting	22
Installing CD Ripper	23

Basic Usage

Listening to Music with yepp	24
Setting up Volume/Hold Functions	25
Changing Modes	26
Recording Voice.....	27
Searching for Music/Voice Files	28

Additional Usage

Loop Repeating	30
Setting up SRS	31
Setting up MENU	32
Repeating Tracks	33
Setting up EQ	34
Managing Files	35
● Deleting	35
● Formatting	36
Customizing Options (Display)	37
● DISPLAY	38
● BACKLIGHT	38
● BEEP	39
● CONTRAST	39
● SCROLL SPEED	40
● POWER OFF TIME	40
● DEFAULT VOLUME	41
● WOW LEVEL	41

Appendix

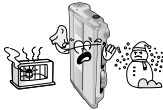
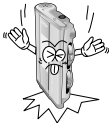

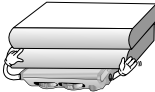

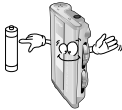
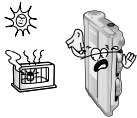

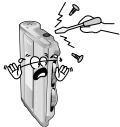
Description of Buttons (yepp player)	42
MENU Table	44

Customer Support

Troubleshooting	46
Specifications.....	48

Safety Instructions

Read and understand all the instructions to avoid injury to yourself and damage to the equipment.

<p>Do not expose to extreme temperatures (above 95°F or below 23°F). Do not expose to moisture.</p> 	<p>Do not apply excessive pressure to the device.</p> 	<p>Do not let any foreign matter spill into the device.</p> 
<p>Do not place heavy objects on top of the device.</p> 	<p>Do not expose to chemicals such as benzene and thinners.</p> 	<p>Remove batteries when the device is left unused for a long period of time.</p> 
<p>Do not expose to direct sunlight or heat sources.</p> 	<p>Do not store in dusty areas.</p> 	<p>Do not try to disassemble and repair the device yourself.</p> 

Earphones

Follow Traffic Safety Instructions

- Do not use the earphones while driving an automobile or riding a bicycle. It's not only dangerous, but also against the law.
- It may cause an accident if you turn up the volume of the earphones while walking down the street, especially crossing at intersections.

Protect your ears

- Do not turn up the volume too high. Doctors warn against prolonged exposure to high volume.
- Stop using the device or turn the volume down if you have ringing in your ears.

Ambient operating conditions

- Ambient temperature: 5°C ~ 35°C (41°F ~ 95°F)
Humidity : 10 ~ 75%

Environmental Information

- Follow local guidelines for waste disposal when discarding packages, batteries, and old electronic appliances.
- Yepp packages use cardboard, polyethylene etc., and do not use any unnecessary materials.

DIGITAL SOUND yepp'

Miniature Design

Convenient small and light design

Removable Storage Device

You can easily copy and paste files to the yepp player using Windows Explorer

Upgradable

You can upgrade the built-in programs if available.

ex) Add functions, CODEC, etc.

Please check the yepp home page (<http://www.samsungyepp.com>) for upgrades.

DIGITAL SOUND yepp'

MP3 & WMA Playback

MP3 is an MPEG1 Layer3 audio format.

WMA is an Microsoft Windows Media audio format.

Playing Time

This unit uses one AAA/LR03 alkaline battery. Operation can last up to 15 hours. Actual playing time may vary according to the type and capacity of the battery.

Featuring 3D Sound

The 3D feature adds spaciousness to the sound.



is a trademark of SRS Labs, Inc.

WOW technology is incorporated under license from SRS labs, Inc.

DIGITAL SOUND **yepp'**

Voice Recording Function

Suitable for recording lectures, meetings.

Backlight

Attractive Blue-Color Backlight

Sound

You can adjust the equalizer manually.

Components



yepp'

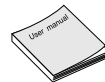
Player



Earphones
AH30-00056B



USB Cable
AH39-00498A



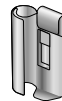
User manual
AH68-01283E



One Battery
(1.5V AAA/LR03 type)
4301-000115



Neck Strap
AH61-01370A



Belt Clip
AH61-01411A

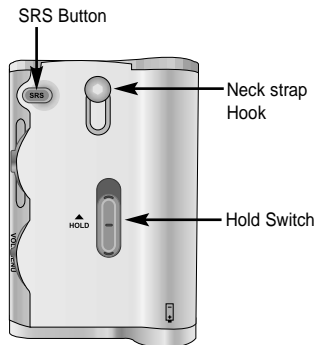
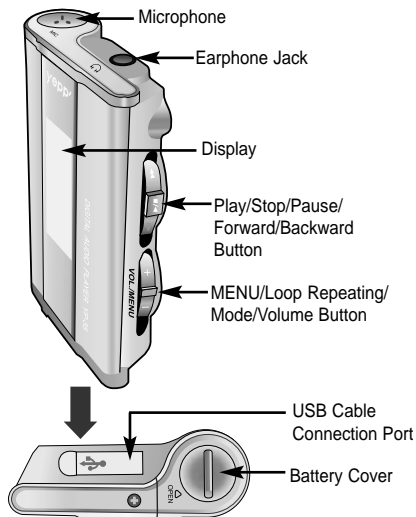


installation CD
AH80-00051C

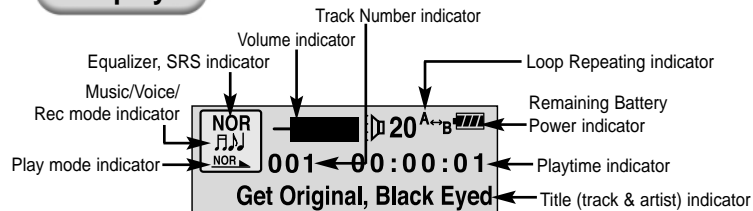
Model	YP-35 S	YP-35 H
Built-in memory	64MB	128MB

- The capacity of the useable built-in memory is less than indicated as the internal firmware uses a part of the memory as well.
- Design of accessories is subject to change for improvement without notice.

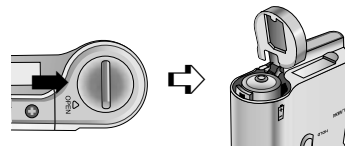
Location of Controls (yopp)



Display



Inserting a Battery



- 1 Slide the cover in the direction of the arrow to open.
- 2 Insert a battery to the right poles **+**, **-** and push-close the cover in the direction the arrow as indicated.

Connecting yepp to PC

System Requirements.

- Pentium 133MHz or greater
- Windows 98 SE/ME/2000/XP
- 20MB of available hard disk space
- CD-ROM drive
- (double speed or greater)
- USB port (1.1) supported
- VGA graphic

Note :

- Install the operating system in Administrator Account mode for Windows 2000 or XP. Otherwise, installation will not be completed.
- Windows ME, 2000 and XP can recognize the driver without installing the provided program. However, you must install the program in order to format yepp and upgrade firmware.
- If the YP-35 program has not been installed in Windows 98, then it will not communicate with your removable disk. You must install the USB driver file first.

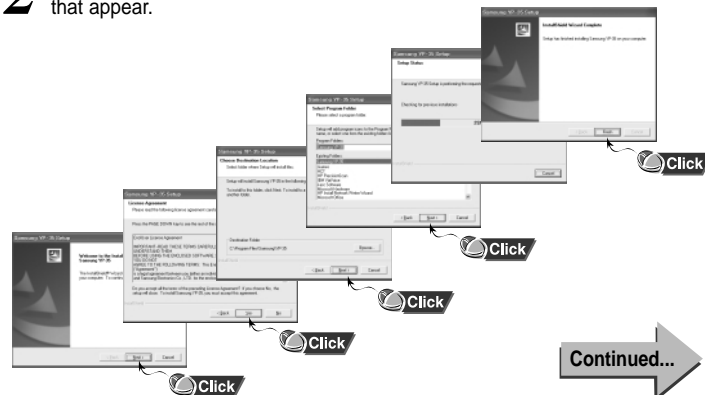
Before connecting yepp to PC, make sure to install USB driver. If "Add New Hardware Wizard" appears, press the [Cancel] button and install USB driver.

Installing software

- 1** Insert the Installation CD into CD-ROM drive. The picture shown below appears. Select [USB Driver Install].



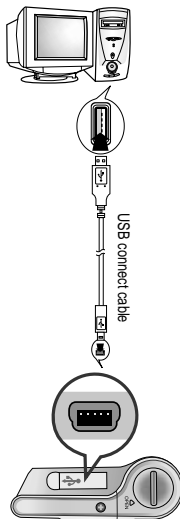
- 2** Click [Next] in the series of windows that appear.



When installation is completed, connect yepp to PC and use it as shown on the next page.

Connecting yepp to PC with USB cable

- 3 Plug one end of the USB cable into the USB port on the back of the PC.
- 4 Connect the opposite end of the USB cable to the USB cable port on the bottom of the yepp.
 - If you disconnect the USB cable from your PC while implementing a command or initializing during USB driver installation, your PC may not function correctly.
 - The yepp will automatically turn on.
- 5 USB driver is installed with a message saying that it is searching for a new device. You may not see the display screen during installation. Go to the device manager to check that installation has been successfully completed.
- 6 Upon installation of the USB driver "SAMSUNG YP-35" will appear in the [System Properties] → [Device Manager].



Note :

How to check USB driver

Windows 98:

Control Panel → System → Device Manager → Universal Serial Bus controllers/SCSI and RAID controllers

Windows 2000:

Control Panel → System → Hardware → Device Manager → Universal Serial Bus controllers → USB Mass Storage Device

Windows XP:

Control Panel → System → Hardware → Device Manager → Universal Serial Bus controllers → USB Mass Storage Device



- 7 When USB driver is not Installed automatically, refer to next page.

Note :

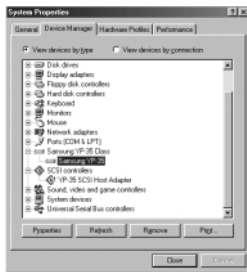
For WinXP, the following window will appear whenever you connect the USB cable to your yepp.



Manual Installation of USB Driver

Go to "Downloading/Uploading files" on page 20 if the USB driver is in place.
Follow these steps if the USB driver is not in place :

- 1 Check the device manager.
Windows 98,ME:
Control Panel → **System** → **Device Manager**
Windows 2000:
Control Panel → **System** → **Hardware** → **Device Manager**
Windows XP:
Control Panel → **System** → **Hardware** → **Device Manager**



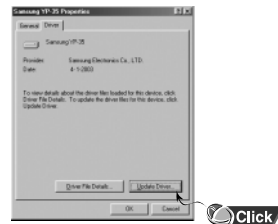
- 2 Check if there is a device listed with an exclamation point or a question mark (displayed as unknown device or USB device).

- 3 Double click on the device listed with an exclamation point or a question mark.

Note :

- If you are using Windows 2000 and your version of Windows does not recognize the USB driver, please download and install the latest service pack from windowsupdate.microsoft.com
- The installation method may vary depending on the type of PC or operating system. Contact your PC dealer or service center for installation information.
- If errors occur continuously when you install the USB driver, reconnect the USB cable after rebooting your system.

- 4 After selecting the driver, click on **[Update Driver]**.



- 5 Select a compatible driver, click on **[Next]** to finish.

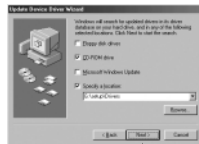


For Windows 98, refer to page 18.

Continued...

In Windows 98

Click **[Next]** button in the series of windows that appear.



USB driver location
[CD ROM]\setup\Drivers

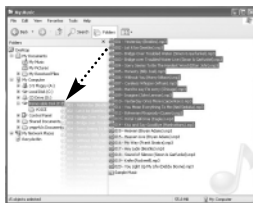


- To complete the installation process, reboot the system.

Using the removable storage

Downloading/Uploading files

- 1 Turn on the yepp and connect yepp to PC.
- 2 Open Windows Explorer on PC.
- 3 Select the file to save and drag-and-drop it into the removable disk icon. The saved files will be played in the order of file name. If you want to change the order, please change the file name.



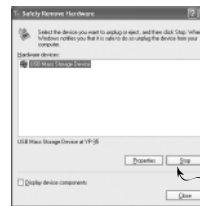
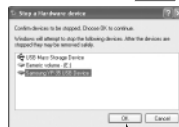
Notice :

- The "WRITING/READING" message will appear during file download or upload. Disconnecting the USB cable while "WRITING/READING" is displayed may cause malfunction of the unit.
- Files within a user created folder can only be played in Music Mode.
- The order of music files is not relative to the replay order when you select a Solid Disk in Windows Explorer.

Disconnecting the USB cable

After completing the file transmission, you must disconnect the cable in the following way:

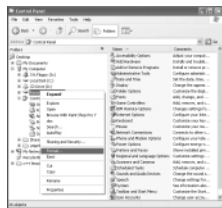
- 1 Double-click on the green arrow in the taskbar on the bottom right of the window. Disconnect the USB cable.
- 2 Select the USB device, and then press the [Stop] button.



Installing CD Ripper

Formatting

1 Select the removable disk icon and click the right mouse button to select **[Format]**.



2 Press the **[Start]** button.

- All saved files will be formatted.
- You can change the name of removable disk by selecting **[Volume label]**.



Notice :

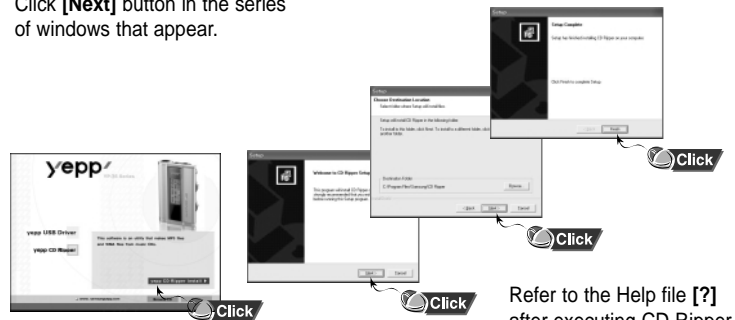
- You must format YP-35 with the provided formatting program only . The device cannot read data if you attempt to format without the YP-35 program. (The 'Please Reformat' message will appear on the main body.) Format only after you have installed the YP-35 program.
- Care must be taken as formatted files can not be recovered.
- By formatting, all previously preset menus will be initialized.

Note :

- You can format by executing "YP-35 Format" located under **[Start] → [All Programs]**

Insert the Installation CD in the CD-ROM drive.

Click **[Next]** button in the series of windows that appear.



Refer to the Help file **[?]** after executing CD Ripper.

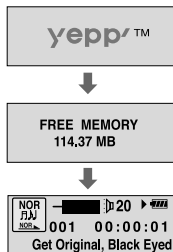
Note : When you install the CD-Ripper, Windows displays "for Windows 98", but you can use it with Windows 2000 and XP as well.

Listening to Music with yepp

First, insert the battery and connect the earphones to the player.

Playing Music (Power On)

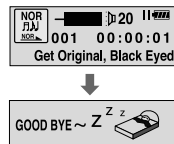
When you press the ►/■ button, the yepp logo appears and a music/voice file is played.



Stopping Music (Power Off)

When you press the ►/■ button while playing, the music stops. If no buttons are pressed within 10 seconds (changes depending on settings), the yepp automatically powers off.

- You can also turn off the power by pressing and holding the ►/■ button on the main body.



- Note :**
- WMA files can only be played at bit rates between 48Kbps and 192Kbps.
[supplied by Windows Media Player (Ver 8.0)] WMA files less than 48Kbps may not be played.
 - Power off time can be set in the MENU mode.

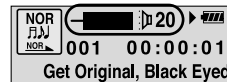
Setting up Volume/Hold Functions

Adjusting the Volume

Press the +/− button on the side of the yepp player to adjust the volume while playing.

Note :

- Volume ranges from 00 to 30.
- Press to adjust the volume by one level.
Press and hold to increase or decrease the volume in greater increments.



HOLD Function




Under Hold mode, buttons will not work.

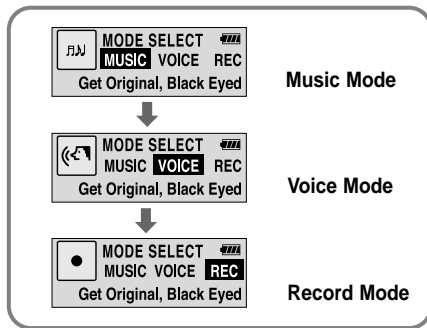
Slide the HOLD switch on the player in the direction of the arrow.

- Buttons on the yepp player will not work.
- When a button is pressed, "HOLD!" message will appear on the display.



Changing Modes


- 1 Press the  button briefly while the player is stopped.
- 2 Move to the mode you want by using the  button, and then press the  button.



Note : ● You will exit from the Mode Switching function if no action is taken for 10 seconds or if another button is pressed during mode switching.

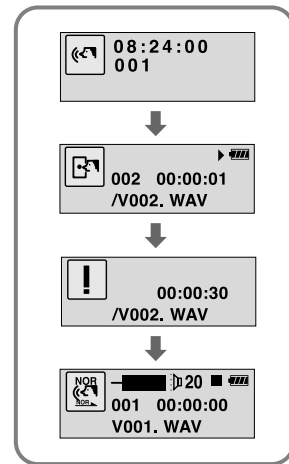
Recording Voice

To Record Voice

- 1 Recording will begin when Recording Mode is selected in Mode Switching.
- 2 Recording will pause when the  button is pressed. Press the button once again to recommence recording.
- 3 When the Mode button is pressed, recording will stop, a voice file will be created, and you will be switched to Voice Mode.

Note :

- The number of saved voice files and hours available for recording will be displayed when Record Mode is selected while the player is stopped.
- Recording is done in the order of V001,V002.....
- When memory is full, recording stops automatically.
- The Recording function only activates when the player is stopped.
- The LCD will not illuminate during Voice Recording.



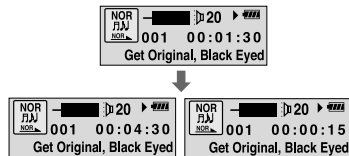
Searching for Music/Voice Files

Note :

- VBR(Variable Bit Rate) file:
MP3 file whose compression rate changes when played.
- With VBR files, pressing the ◀◀ button within 5 seconds from the start of the track may not result in the previous track playing.
- With VBR files, the actual running time may differ from that of the player display.
- This player may not play back MPEG1 LAYER1 files.

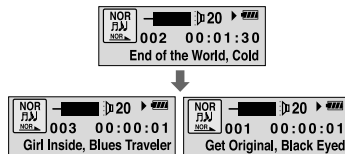
Searching for Specific Parts in PLAY Mode

- Press and hold the ◀◀/▶▶ button while playing to find the part you want to listen to.
- Release the ◀◀/▶▶ button to resume playing.



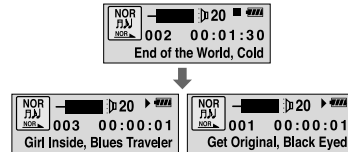
Searching for Music Files in PLAY Mode.

- Press the ▶▶ button briefly to play the next track.
- Press the ◀◀ button briefly within 5 seconds from the start of the track to play the previous track. Press the ◀◀ button briefly after 5 seconds from the start of the track to play from the beginning of the current track.



Searching for Music Files in STOP Mode.


- Press the ◀◀/▶▶ button in STOP mode to skip to the previous or next track.



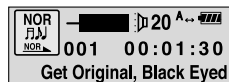
Loop Repeating

Loop Function


Starting Point

While playing music files, press the  button briefly at the beginning of the loop you want to set.

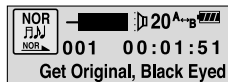
A↔ blinks in the display.



Ending Point

Press the  button briefly again to set the end of the loop.

A↔B appears in the display.
The loop is played repeatedly.

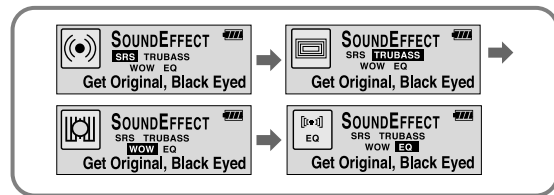


Note :

- Press the  button briefly to cancel the loop.

Setting up SRS (Sound Retrieval System)

- 1 Press the **SRS** button while in Music Mode.
- 2 Press and hold the **SRS** button briefly to select the mode you want.




- **SRS** : You will hear 3D Stereo sound.
- **TRUBASS** : This is a bass boost feature that adds fullness to the sound.
- **WOW** : This feature allows you to enjoy the SRS and Trubass features simultaneously.
- **EQ** : Plays at the last EQ setting you made.


Note :

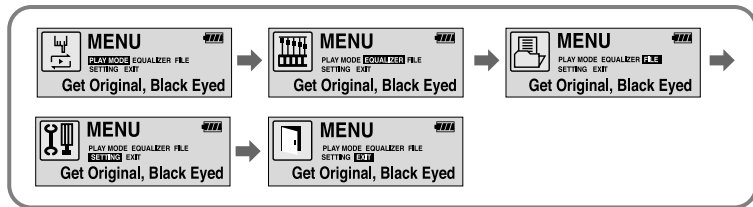
- Please adjust the volume to a suitable level, as the volume may increase in the SRS setting.
- This unit supports sampling frequencies of 32KHz, 44.1KHz or 48KHz.

Setting up MENU

To switch to Menu Mode, press and hold the  button while in Music/Voice Mode.

Press the  button briefly to select the menu you want.

To exit from Menu Mode, press and hold the  button once again.



- **PLAY MODE** : To select track repeating mode.
- **EQUALIZER** : To use equalizer function.
- **FILE** : To delete or format music files.
- **SETTING** : To change the basic setup options of the display.
- **EXIT** : To exit MENU.

Note :

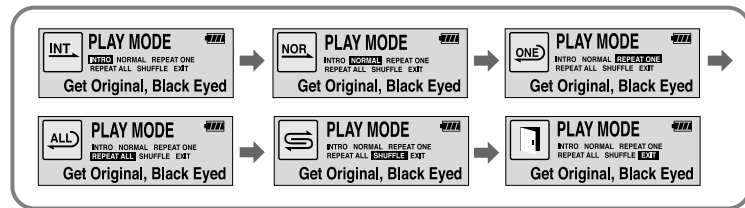
- In MENU mode, no input for 10 seconds will cancel the MENU mode.
- Menu mode will be released if any button other than the Volume +/- button is pressed.

Repeating Tracks

Track Repeating Function

1 In **MENU**, select **PLAY MODE**. (refer to “Setting up MENU”)



2 In **PLAY MODE**, use the  button to move to the mode you want and press the  button to select.

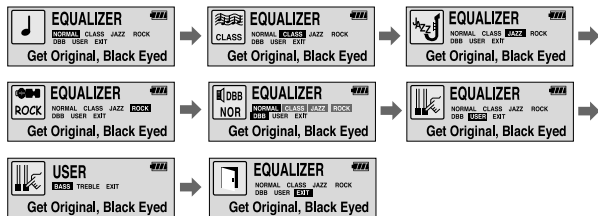


- **INTRO**: To play the first 10 seconds of each track.
- **NORMAL**: To play all the tracks in order one time.
- **REPEAT ONE**: To repeat one track.
- **REPEAT ALL**: To repeat all tracks.
- **SHUFFLE**: To play tracks at random.
- **EXIT**: To move to the upper menu.

Setting up EQ

EQ Function

- 1** In **MENU**, select **EQUALIZER**. (refer to “Setting up MENU”)
- 2** In **EQ**, use the  button to move to the setting you want (out of the 4 settings) and press the  button to select.
 - Select the DBB Mode if you want to fine-tune the sound.
- 3** If you want to manually adjust the equalizer, select **User** and **Bass/Treble**.
 - The adjustment range of Bass/Treble is 0 to 10.




Note :

- DBB is for Dynamic Bass Booster, which enhances bass response.

Managing Files

Deleting

- 1 In **MENU**, select **FILE**. (refer to “Setting up MENU”)
- 2 In **FILE**, select **DELETE** and the mode (Music or Voice) the target file is in.
- 3 Move the Volume button to the file you want to delete, and then press the  Mode button. Select **CANCEL** to cancel.



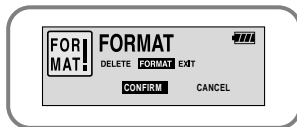
Continued...

Customizing Options (Display)

Formatting

1 In **MENU**, select **FILE**. (refer to “Setting up MENU”)

2 In **File**, select **FORMAT**.





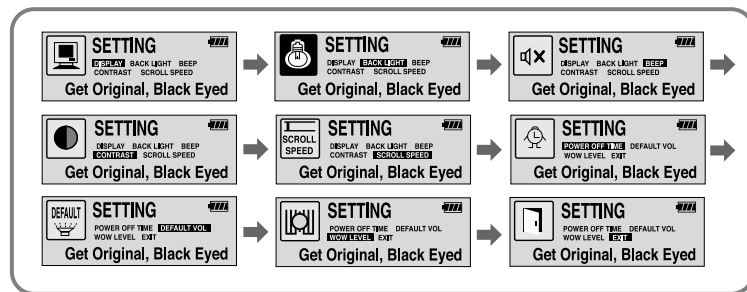
Note :

- All files will be deleted when formatting the built-in memory.

Setting Function

1 In **MENU**, select **SETTING**. (refer to “Setting up MENU”)

2 In **SETTING**, use the  button to move to the function you want to change and select the function by using the  button.



DISPLAY

- **PLAY TIME:** displays current play time
- **REMAIN TIME:** displays remaining play time
- **USED SIZE:** displays using memory
- **FREE SIZE:** displays remaining memory



BACK LIGHT

- Use the button to set the Backlight "ON" time.
- The setting range of backlight-on time is 0 to 10 seconds.
- * The backlight does not illuminate when the residual battery level is insufficient.



BEEP

- Use the button to set the BEEP mode.
- **BEEP ON:** A beep sounds each time a button is pressed.
- **BEEP OFF:** No beep sounds when a button is pressed.

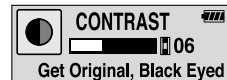
Note :

- No beep sounds while playing or recording of a music/voice file even when set to 'BEEP ON'.




CONTRAST

- Use the button to set the Contrast.
- The setting range of the contrast, which adjusts the brightness of the screen, is 0 to 10.




Continued...

SCROLL SPEED

- Use the  button to set the Scroll Speed.
- The setting range of the scroll speed, which adjusts the speed of the track title flow, is 0 to 10.

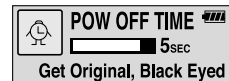


POWER OFF TIME


- Use the  button to set the Power Off Time.
- The setting is 5 different levels ranging from 0 to 25 seconds. The power will turn off after the set time if no button is pressed when the playback ends.

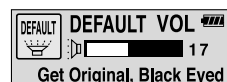
Note :

- When '0 second' is set, the power will not turn off but will remain in Standby Mode.




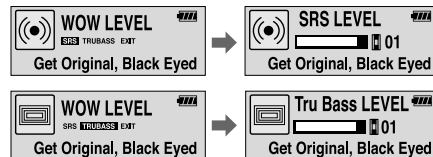
DEFAULT VOLUME

- Use the  button to set the Default Volume.
- The default volume setting range of the unit is 0 to 25. If the Volume is above 25(26-30) when you turn the device off, it will default to 25 when the device is turned back on.
- If the Volume is set to 25 or lower when you turn the device off, it will return to that setting when it is turned back on.



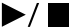

WOW LEVEL




- The levels of SRS and TRUBASS can be adjusted.
- Select the mode you want by using the  button.
- The level for SRS and TRUBASS can each be set within the range of 0 to 10.



Continued...

Description of Buttons (yebb player)

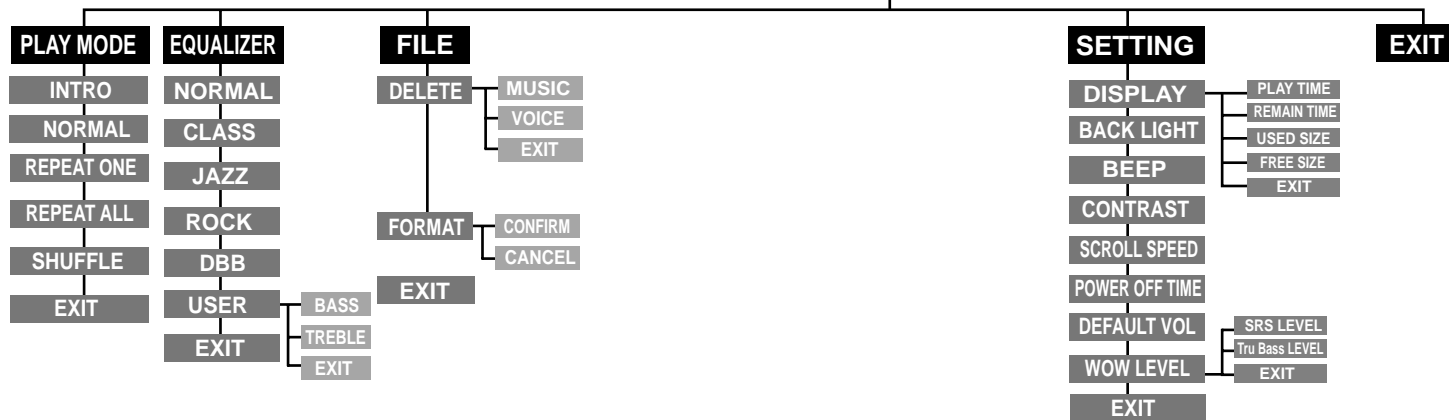
BUTTON	STATUS	PRESSING LENGTH	RESPONSE
	Power Off	Longer than 2 Seconds	Power On, and play
	Play	Short	Pause(When no button is pressed for 10 seconds, yebb powers off automatically) Press and hold the 2 seconds Power Off.
	Intro Play	Short	Cancels Intro, returns to Play mode
	Play	Short	Play the next track
	Play	Longer than 2 Seconds	Fast forward search in PLAY mode
	Stop/Pause		Play the next track
	MENU Mode		Cancel MENU

	Play	Short	Within 5 seconds from the start: Play the previous track After 5 seconds from the start: Play the beginning of the current track.
	Play	Longer than 2 Seconds	Fast reverse search in PLAY mode
	Stop/Pause		Play the previous track
 Volume	Play or Stop Mode		Volume increase/decrease
	MENU Mode		Move MENU
 Menu	Play	Short	Set the starting point for loop function
	During Loop Setting	Short	Loop mode
	Loop Mode	Short	Cancel loop mode
	Stop	Short	Changing modes (music ↔ voice ↔ Recording)
	Play or Stop Mode	Longer than 2 Seconds	Enter MENU
	MENU Mode		Selection/Exiting MENU

MENU Table

MENU

● Select with the  button and move.



Troubleshooting

yepp does not work and the LCD displays nothing.

- Check the battery capacity
- Check to see if the battery is inserted to the right poles (+ , -)

In PLAY mode, music is not played after pressing the ►/■ button

- Check to see if MP3 or WMA files are saved in the built-in memory.
- Check to see if the HOLD switch is locked.
- Check if the memory is full.

Files cannot be downloaded.

- Check to see if the driver is installed correctly in the computer.
- Check the connection between yepp and computer.
- Check and/or replace the battery, turn on the yepp's power.
- The Windows98 operating system limits the number of files you can save.
Please save your music files by creating a subfolder.

Backlight does not work.

- Check the backlight setup.
- When the battery power is low, the backlight will go out.

The buttons do not work.

- Check setting of Hold switch.
- When the message "Please Reformat" is displayed, please format your YP-35 by installing the software using Windows Explorer.

yepp keeps being turned off.

- In Stop mode, the power is automatically turned off after ten seconds (changes depending on settings).
- Check to see if there are files saved in it.

Something's wrong with play time displayed during Play mode.

- Check if it plays a VBR (Variable Bit Rate) file.
The time display of a VBR file is inconsistent.
- The time may be incorrect for high compressed (bps) files.

LCD window is dark

- Check Contrast

Specifications

Model	YP-35
Built-in Memory capacity	64MB(YP-35 S) / 128MB(YP-35 H)
Voltage	1.5V X 1 (AAA/LR03 size alkaline battery)
Playing time	lasts up to 15hours (Alkaline battery, MP3 128Kbps, Vol level 20)
Dimensions/Weight	2.62 X 1.77 X 0.65 inches / 1.04 oz (without battery)
Case	Plastic / Aluminum
Noise Ratio	80dB with 20kHz LPF (1KHz 0dB)
Earphones Jack Output Power	5mW(Max 10mW)/CH (16 Ω)
Output Frequency Range	20Hz ~ 20kHz
Operating Temperature Range	-5 ~ +35°C (23 ~ 95F)

SAMSUNG
ELECTRONICS

Samsung Limited Warranty

Samsung Electronics Canada Inc. (SECA), warrants that this product is free from defective material and workmanship.

SECA further warrants that if this product fails to operate properly within the specified warranty period and the failure is due to improper workmanship or defective material SECA will repair or replace the product at its option.

All warranty repairs must be performed by a SECA authorized service centre. (The name and address of the location nearest you can be obtained by calling toll free 1-800-726-7864 or visiting our web site at www.samsung.ca)

Labour
one (1) year (carry-in)

Parts
one (1) year

On carry-in models, transportation to and from the service centre is the customer's responsibility.

The original dated sales receipt must be retained by the customer and is the only acceptable proof of purchase. It must be presented to the authorized service centre at the time service is requested.

Exclusions

This warranty does not cover damage due to accident, fire flood and/or other acts of God; misuse, incorrect line voltage, improper installation, improper or unauthorized repairs, commercial use, or damage that occurs in shipping. Exterior and interior finish, lamps and glass are not covered under this warranty. Customer adjustments which are explained in the instruction manual are not covered under the terms of this warranty. This warranty will automatically be voided for any unit found with a missing or altered serial number. This warranty is valid only on products purchased and used in Canada.

MEMO

MEMO